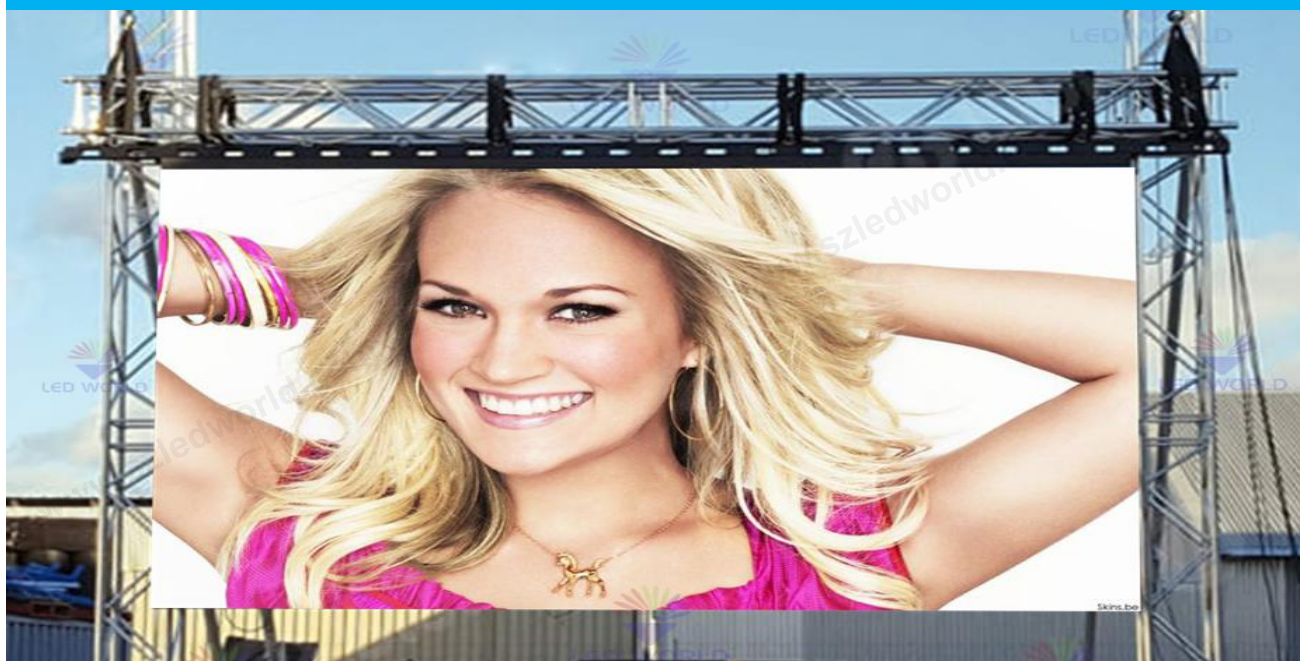
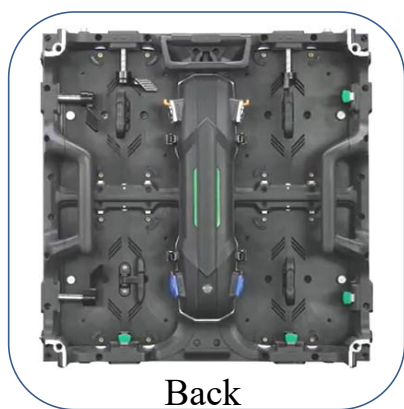


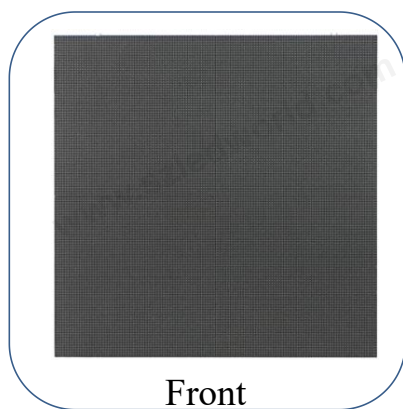
RK500 Series Outdoor Rental LED Display



Module & cabinet:



Back



Front



Side

Features:

- Suitable for P2.976, P3.91, P4.81 outdoor
- Modular control box easy for changing power supply and receiving card
- Magnetic module design to realize quick front and back service
- Location pins left and right for fast assembly
- Lightweight only 8kg per panel
- Super thin, only 85mm thickness
- Power connectors & ethernet connectors are easy to assemble & disassemble



Application:

Stage Performance
 Conference
 Celebration
 banquet
 exhibition

Technical Specifications:

Pixel Pitch	P2.97	P3.91	P4.81
LED type	SMD1415	SMD1921	SMD1921
Pixel configuration	3-in-1 SMD	3 in 1 SMD	3-in-1 SMD
Pixel density	112,896 pixels/m ²	65,536 pixels/m ²	43,264 pixels/m ²
Module dimension(W*H)	250*250mm	250mmx250mm	250mmx250mm
Module resolution	84*84dots	64*64dots	52*52dots
Drive Method	1/21 scan	1/16 scan	1/13 scan
Maintenance	Front and back	Front and back	Front and back
Cabinet size (W*H)	500*500mm	500x500mm	500x500mm
Cabinet depth	85mm	85mm	85mm
Cabinet material	Aluminum	Aluminum	Aluminum
Cabinet weight	8kg/pcs	8kg/pcs	8kg/pcs
Brightness	≥4000 cd/m ²	≥4000 cd/m ²	≥4000 cd/m ²
Best Viewing Distance	3m to 30m	4m to 40m	5m to 50m
Viewing Angle	140 * 140	140 * 140	140 * 140
Grey Level	14 Bit	14 Bit	14 Bit
Refresh Rate	≥1920HZ	≥1920HZ	≥1920HZ
Power consumption(Avg.)	70w/cabinet	65w/cabinet	60w/cabinet
Power consumption(Max.)	200w/cabinet	195w/cabinet	190w/cabinet
Humidity-operating	10% ~ 95%	10% ~ 95%	10% ~ 95%
Operating Temperature	-20° - 50° C	-20° - 50° C	-20° - 50° C
Screen life	≥100000 hours	≥100000 hours	≥100000 hours
Controlling System	Synch or Async	Synch or Async	Synch or Async
Certificates	CE,RoHs,FCC,UL	CE,RoHs,FCC,UL	CE,RoHs,FCC,UL
Ingress Protection (IP)	IP65	IP65	IP65
Warranty	3 Years	3 Years	3 Years

Notes: Specifications are for reference only. Please contact our salesperson for details. All rights are reserved to SZLEDWORLD.