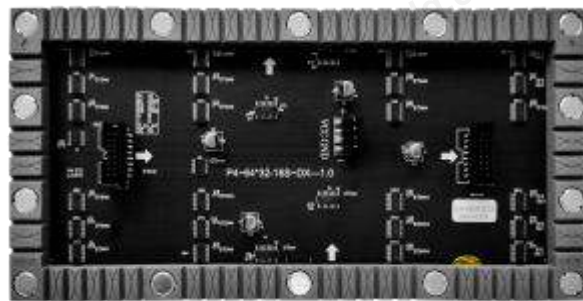
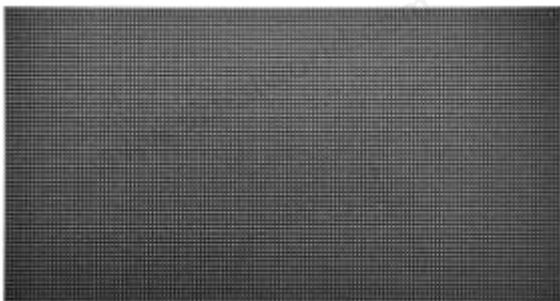


Flexible LED module-256mmx128mm



Warning:



Technical Specifications:

Pixel pitch	P2	P4
Pixel Configuration	1R1G1B	1R1G1B
Lamp	SMD1515	SMD2121
Pixel Density (dots/m ²)	250,000	62,500
LED module size(mm)	256x128	256x128
Pixel / Module	128x64	64x32
Diver mode	1/32	1/16
refresh rate (Hz)	≥2880	≥1920
Frame frequency (Hz)	50&60	50&60
Gray scale (bit)	12-16 adjustabel	12-16 adjustabel
Signal interface	HUB75	HUB75
Bottom Case Material	Silicone	Silicone
Weight (kg/pcs)	0.235	0.19
Service	front&back	front&back
Brightness	≥750	≥850
Color Temperature	3000~10000	3000~10000
Viewing Angle	140°/160°	140°/160°
Contrast	5000:1	5000:1
LED module voltage	DC5v	DC5v
Module Max electric current (A)	3	2.8
Module Max power consumption (w)	15	14
Supply Voltage AC (V)	110~220	110~220
Max power consumption (w/m ²)	600	600
Average power consumption (w/m ²)	200	200
Led Life (Hours)	100,000	100,000
Operating Temperature(°C)	-10~+50	-10~+50
Storage Temperature(°C)	-20~+60	-20~+60
Operating Humidity(RH)	20%-85%	20%-85%
Storage Humidity(RH)	20%-80%	20%-80%

Notes: Specifications are for reference only. Please contact our salesperson for details. All rights are reserved to Led World.